

PA2000 SERIES
CELL PHONE ENTRY SYSTEM
USER MANUAL

Rev. N

Platinum Access Systems Inc.

PRODUCT LINE

PA2020 --- Cell Phone Entry System

PA2022 --- Cell Phone Entry System (Flush Mount)

PA2120 --- Cell Phone Card Reader System

PA2122 --- Cell Phone Card Reader System (Flush Mount)

SPECIFICATIONS AND FEATURES

1. Cell Phone Link with Link Indicator

With SIM card, the unit uses local cell phone network to make phone calls. Link LED on "CALL" button will flash when the unit is linked to local GSM network.

2. Phone Number Capacity

Memory Capacity: 2000 numbers

Phone ID: 0-1999, up to 20 digits phone number, including area code

3. Key Entry Code Range

Primary Code (Control Relay1)

4-digit key code: 0000-9999

Memory Capacity: 10000 codes

Secondary Code (Control Relay2)

4-digit key code: 0000-9999

Memory Capacity: 10000 codes

4. RFID Card Reader (PA2120/PA2122)

Memory Capacity: 2000 cards

5. Activity History Logging

Latest 2000 activity history log, readable via USB drive.

6. Remote Open Operation via Phone

By pressing "9" or "5" key on remote phone unit, the output relay1 or relay2 can be activated.

7. USB Programming Capability

With the Platinum USB drive, the phone number, key code and card code can be uploaded to and downloaded from the unit.

8. Text Message Control Capability

5 phone numbers can be authorized to send text messages to control the unit.

9. Temporary Key Code Assignment

A temporary key code and valid period can be set via text message.

10. Hold Open Operation

A programmable 5-digit code to turn on/off hold open operation on keypad.

Hold open operation can also be configured via text message remotely.

11. Modify Key Code and Phone Number Remotely

Key code and phone number can be modified via text message commands.

12. Backlit Keypad / CALL Button and Front Phone Directory Light

The lights will be automatically turned on when environmental light is dimmed.

13. Request to Exit Input

A NO (Normal Open) contact input for codeless open activation.

14. AUX Inputs

2 AUX inputs can be used to check gate status. They are accessible via text message commands.

15. Control Outputs

2 NO/NC relays with 10Amp @ 120VAC or 8A @ 30VDC with programmable strike durations.

1 AUX output, solid state 300mA.

16. Real Time Clock

The time can be set and checked by text message commands. The clock is powered by additional on board backup battery.

17. Phone Directory Card

Phone directory with up to 10 or 12 names on the front panel.

18. Master/Slave Configuration

The unit can play as master to work with slave devices (Platinum keypad, card reader). Via RS485 link between master and slave

devices, all key codes or card codes entered on slave devices will be processed on this master unit.

19. Wide Range DC Power Supply Input

9V-24V / 2A DC Power Supply (Default AC/DC adaptor: 12V/2A)

20. Battery Backup

Internal rechargeable battery provides >24 hours power backup.

21. Low Battery Audible Alarm

When the batteries are getting low voltage, the unit will send out alarm beep periodically to notify the users. AC power or replacing batteries is needed to restore the unit back to normal.

22. Remote Control from iPhone

For iPhone users, “Platinum Remote Access” app can be downloaded from Apple store to remotely control the unit.

INSTALLATION

1. Wiring

See Fig.1 Main PCB Terminals.

- (1). Connect DC power to “9VDC” terminals.
- (2). Connect the 2 internal batteries to “-BAT1+” and “-BAT2+” terminals.
- (3). Connect “NC1/COM1/NO1” or “NC2/COM2/NO2” to external devices.
- (4). Connect “EXIT/GND” to external strike open switch.
- (5). Connect RS485 cable on “A B GND” terminals.
- (6). Connect “IN1/GND”, “IN2 /GND” to the external device event outputs (Ex: limit switches on operator) to monitor the gate status.
- (7). Connect “AUX/GND” to an external device for operating remotely via text messages.

2. SIM Card

With power off, plug an active SIM card into SIM card socket, see Fig.1 Main PCB Terminals.

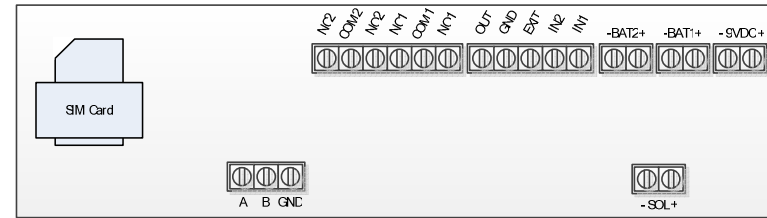


Fig.1 Main PCB Terminals

3. Indicators and Switches

See Fig.2. Font Panel

**Note: Link LED will flash when local GSM network is connected.
No phone call can be made without Link LED flashing.**

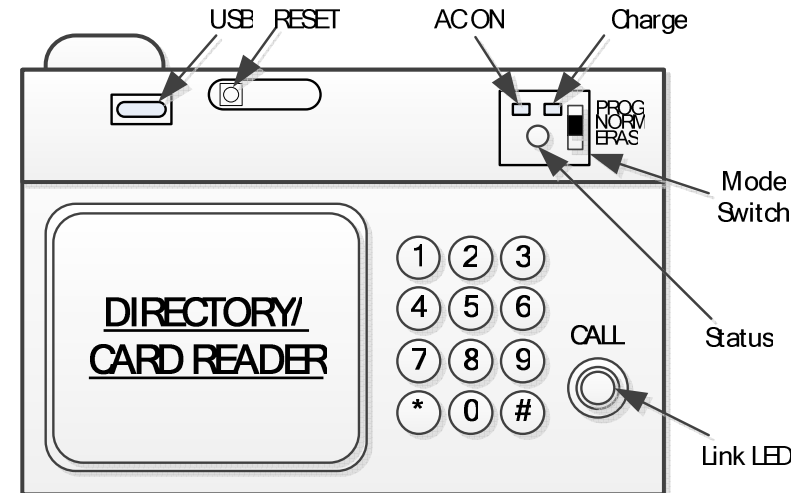


Fig.2 Font Panel

OPERATIONS

1. System Reset

Push “RESET” button to initialize the unit. Allow 20 sec for the unit to boot up.

2. **“*” Button Operation**

During key entry, press “*” button to cancel the keys entered.

During phone call, press “*” button to hang up phone call.

3. **Program Mode**

Selected by Mode Switch (“PROG” position). Status LED is flashing in "Yellow".

(1). **Program Status:**

Beeping twice with green light: Program success
Beeping once with red light: Program fail

(2). **Program Key Code:**

Primary Code: xxxx + “#” Enter 4-digit key code followed by “#”.

Secondary Code: “2#” + xxxx + “#” Enter “2#” and 4-digit key code followed by “#”.

(3). **Program Phone Number:** Enter phone ID (0-1999) + “CALL” + full phone number + “#”.

Ex: 0+”CALL”+19491234567#
12+”CALL”+16261234567#
123+”CALL”+17141234567#
1234+”CALL”+19091234567#

Note: Duplicate phone numbers under different phone ID are acceptable.

(4). **Program Card without Card ID (PA2120/PA2122 only):**

Sweep RFID card to program the card code into any available location within the ID range 0000-1999.

(5). **Program Card with Card ID (PA2120/PA2122 only):**

#5xxxx Enter “#5” + 4-digit card ID (0000-1999) and sweep the RFID card to program the card code.

Note: Sweep the different RFID card consecutively, the card ID will automatically increase by 1.

(6). **Set Talk Duration: #60x** x: 1-9, 1 to 9 min (default 5 min)

(7). **Set Relay1 Strike Duration: #7xx** xx: 2-digit 01-99, 1s to 99s

(8). **Set Relay2 Strike Duration: #8xx** xx: 2-digit 01-99, 1s to 99s

(9). **Set Speaker Volume: #10x** x: 0-9, (default 6)

(10). **Set Microphone Sensitivity: #20x** x: 0-2, (default 2)

(11). **Set Hold Open Code: #3xxxxx** xxxxxx: 5-digit 00000-99999

(12). **Set Text Message User Phone Numbers:** See section 6.

(13). **Program from Platinum USB Drive: #411** Download phone book, key codes and card codes from Platinum USB drive to the unit.

- a. Using Platinum standalone software “**PHONE BOOK MANAGER**”, edit and export phone book, key codes and card codes to Platinum USB drive.
- b. Plug in the Platinum USB drive to the unit.
- c. Enter “**#411**” to download the phone book, key codes and card codes to the unit.
- d. Status LED is flashing in green during downloading. Downloading completes upon 2 beeps.

Notes:

- a. Platinum USB drive is included in the product package. It must contain “Platinum ID.txt” and “CONF_D.txt” to work with the unit. “CONF_D.txt” is generated by “**PHONE BOOK MANAGER®**” software.
- b. Card code is for PA2120/PA2122 only.
- c. Before downloading, the existing phone book, key codes and card codes in the unit will be read out and saved to “CONF_BAK.TXT” file on Platinum USB drive.
- d. Download new phone book, key codes and card codes from “CONF_D.TXT” file on Platinum USB drive to the unit.
- e. After downloading, new phone book, key codes and card codes in the unit will be read back and saved to “CONF_BK1.TXT” file on Platinum USB drive as a verification backup.

4. Normal Mode

Selected by Mode Switch (“NORM” position). Status LED is off.

(1). **Operation Status:**

Beeping twice with green light: Operation success
Beeping once with red light: Operation fail

(2). **Key Entry:**

Primary Code: xxxx + “#” Enter 4-digit key code followed by “#”.
Secondary Code: “2#” + xxxx + “#” Enter “2#” and 4-digit key code followed by “#”.

(3). **Phone Entry:** Enter phone ID (0-1999) + “CALL” to make phone call.

Ex: 0+”CALL”, 25+”CALL”, 133+”CALL”, 1567+”CALL”
On phone receiver side, pressing “9” will activate relay1 output.
Pressing “5” will activate relay2 output.

(4). **Card Entry (PA2120/PA2122 only):** Sweep the RFID card/fob.

(5). **Hold Open / Release Hold Open:** #3xxxxx xxxx (5-digit 00000-99999) Hold open or release hold open (hold open control applies to relay1 only).

(6). **Upload Programming Code:** #000 Upload phone book, key codes and card codes from the unit to Platinum USB drive when it is plugged.

- a. Phone book, key codes and card codes in the unit will be read out and saved to “CONF_BAK.TXT” file on Platinum USB drive.
- b. Status LED is flashing in green during uploading.
Uploading completes upon two beeps.

(7). **Upload History Log:** #001 Upload history log from the unit to Platinum USB drive when it is plugged.

- a. The history log file will be read out and saved to “LOG.TXT” file on Platinum USB drive.

b. Status LED is flashing in green during uploading.

Uploading completes with two beeps.

(8). **Service Call:** #999 + “CALL” Automatically call Platinum service phone number (the phone number has been embedded in the unit).

5. Erase Mode

Selected by Mode Switch (“ERAS” position). Status LED is flashing in "Red".

(1). **Erase Status:**

Beeping twice with green light: Erase success
Beeping once with red light: Erase fail

(2). **Erase Key Code:**

Primary Code: xxxx + “#” Enter 4-digit key code followed by “#”.
Secondary Code: “2#” + xxxx + “#” Enter “2#” and 4-digit key code followed by “#”.

(3). **Erase Phone ID:** ID (0-1999) + “CALL”

Ex: 0+”CALL”, 12+”CALL”, 123+”CALL”, 1234+”CALL”

(4). **Erase Card Code without Card ID (PA2120/PA2122 only):**

Sweep the RFID card to erase the card code from the memory.

(5). **Erase Card Code with Card ID (PA2120/PA2122 only):**

#5xxxx xxxx: card ID (0000-1999)

(6). **Erase All Primary Key Codes:** #911

(7). **Erase All Card Codes:** #912

(8). **Erase All Phone Numbers:** #913

(9). **Erase Hold Open Code:** #914

(10). **Erase All Text Message User Phone Numbers:** #915

(11). **Erase All Secondary Key Codes:** #916

(12). **Clear Hold Open Schedule:** #917 (see section 6 (4) to set hold open schedule)

6. Text Message Commands

The unit can be controlled remotely via text messages. To use this feature, authorized user phone numbers need to be programmed.

Maximum 5 phone numbers can be assigned.

(1). Assign Authorized User Phone Numbers:

- a. Set the unit to “PROG” mode by slide switch on front panel.
- b. On keypad, enter

#131xxxxxxxxx	Program #1 phone number
#132xxxxxxxxx	Program #2 phone number
#133xxxxxxxxx	Program #3 phone number
#134xxxxxxxxx	Program #4 phone number
#135xxxxxxxxx	Program #5 phone number
xxxxxxxxxx:	full phone number (3 area code + 7 phone number)
- c. When the operation is successfully done with 2 beeps, then slide the switch back to “NORM” position.

(2). Delete Authorized User Phone Numbers:

- a. Set the unit to “ERAS” mode by slide switch on front panel.
- b. Enter #915 to erase all authorized phone numbers.
- c. The operation is successfully done with 2 beeps. Then push the switch back to “NORM” position.

Note: a. The space (“ ”) in command lines below cannot be omitted.

b. The letters in command line are case insensitive.

(3). Open Command:

open open gate

Note: All users, with phone numbers programmed in the unit, are automatically authorized to open the gate with this command.

(4). Hold Open Command:

hold open Hold the gate open until hold release command is received.

hold open: mm/dd/yy hh:mm – mm/dd/yy hh:mm Single hold open schedule in the time period.

Ex: hold open: 02/25/15 18:20 - 03/25/15 19:20

hold open: hh:mm – hh:mm Single hold open schedule in the time period today.

Ex: hold open: 06:30 - 19:30

hold open: hh:mm – hh:mm y1, y2, ...,y7 y1-y7: Sun, Mon, Tue, Wed, Thu, Fri, Sat. Hold open in the time period on selected weekdays.

Ex: hold open: 07:30 – 19:30 mon, tue, wed, thu, fri

Note: a. Maximum 5 time slots can be assigned.

b. Before using scheduled hold open features, use “set time” and “time?” commands to set and ensure the unit real time clock is synchronized with current date and time.

c. Use “read sch s” and “read sch w” as below to check the schedules are stored in the unit.

(5). Read Hold Open Schedule Command:

read sch s Read single hold open schedule.

read sch w Read weekly hold open schedule

(6). Hold Release Command:

hold release Release held open gate.

(7). Clear Hold Open Schedule Command:

cls hold sch s Clear single hold open schedule
cls hold sch w x x x x x **x: 1, 2, 3, 4, 5** Clear weekly hold open schedule. (Maximum 5 schedules can be selected to clear.)

. **Ex:** cls hold sch w 1 3 5

(8). Assign Temporary Key Code:

add temp keycode xxxx xxxx: 4 digits key code. Valid in default 24 hours.

add temp keycode xxxx yyyh xxxx: 4 digits key code.
yyy: Valid in yyy (1-999) hours.

Ex: add temp keycode 1234 240hrs

(9). Add Permanent Key Code:

add keycode xxxx xxxx: 4 digits key code.

(10). Delete Temporary Key Code:

del temp keycode xxxx xxxx: 4 digits key code.

(11). Add Permanent Phone Number:

add idy ph#xxx.... y: Phone ID number (up to 4 digits).
xxx...: phone number (up to 20 digits)

Ex: add id1234 Ph#19091234567
add id123 Ph#19091234567
add id12 Ph#19091234567
add id1 Ph#19091234567

(12). Delete Permanent Phone ID:

del idy y: Phone ID number (up to 4 digits).

Ex: del id1234
del id123

del id12

del id1

(13). Check Gate Status:

gate status? Report input IN1 and IN2 status.

(14). Set Current Date and Time:

set time Set current time to unit real time clock.

(15). Check Unit Real Time Clock Time:

time? Report date, time and weekday from unit real time clock

(16). Control AUX Output:

aux out: on Set AUX contact on

aux out: off Set AUX contact off

7. Master/Slave Mode

By connecting to Platinum keypad and card readers (set as slave) with RS485 shield cable (3 wires "A/B/GND"), this unit plays as a master device. All key and card codes will be sent to this master device to verify. Open command will be issued to slaves upon valid codes.

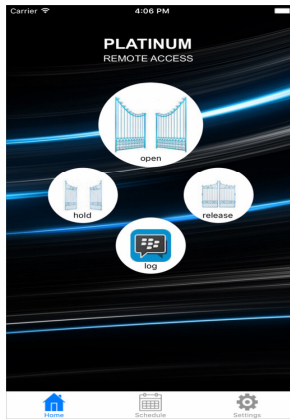
8. Control from iPhone App

(1). With iPhone, download APPLE App from APPLE Store.

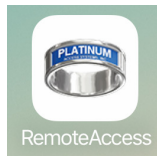
Search "Platinum Remote Access" and install the free App. APPLE account with APPLE ID is required to download and install the App.



Platinum Remote Access



(2). Launch the installed App by clicking the icon as below.

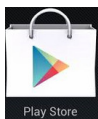


(2). Follow the onscreen instructions on iPhone to control the unit remotely.

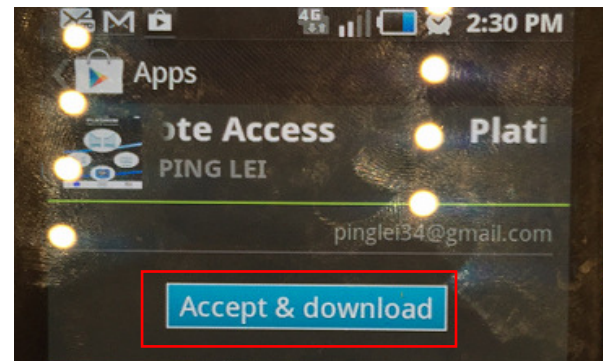
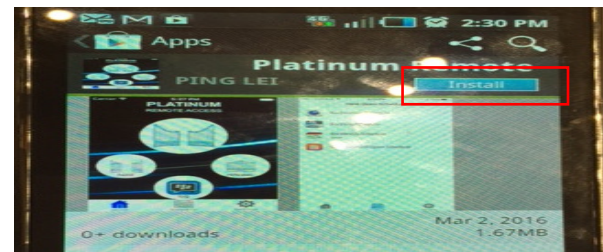
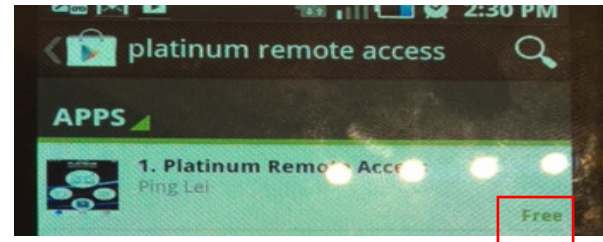
9. Control from Android Smartphone App

(1). Download App from Google Play Store

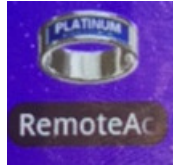
a. With Android phone, log in to Google Play Store. Google Account is required to download and install the Apps from Google Play Store.



b. Search “Platinum Remote Access” and install the App.
Note: The pictures below are for reference only.



d. Add the icon as shown below from “Applications” to Home Screen.



e. Launch the icon to remotely control the unit.

(2). Download App from Platinum URL.

a. With Android phone, enable “Unknown source” under **Settings → Applications** or **Settings → Security**.

b. Browse to “**Downloads**” tab at www.platinumasi.com and download “**Smart Phone Application**” to the phone.

c. Navigate to the download folder on the phone, **Applications → Files → Download**, and tap on the “**Android Platinum Remote Access Vx.x.x.APK**” to install the application.

d. When installation completes, add the icon as shown above from “**Applications**” to Home Screen.

e. Launch the application by clicking the icon.

(3). Follow the onscreen instructions on smartphone to control the unit remotely.